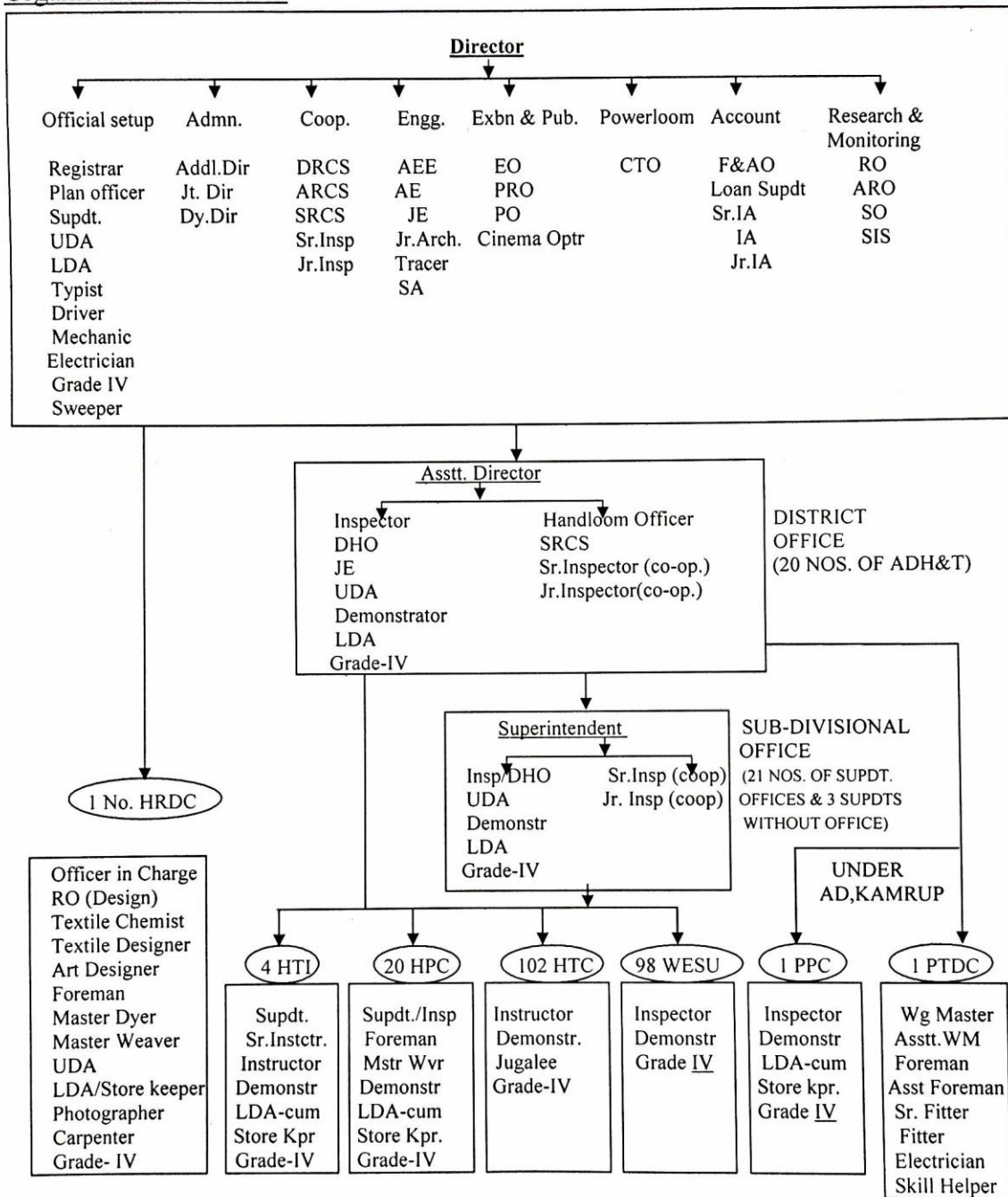


## Organisational Structure



### ABBRVIATION :

DRCS - Dy.Registrar(Coop)	EO -Exhibition Officer	SIS - Sub Inspector,Stats.	SA - Sactional Assistant
ARCS -Asst Registrar(Coop)	PO -Publicity Officer	UDA – Upper Divn Asstt.	AE - Asstt. Engineer.
SRCS - Sub-Registrar(Coop)	WM-Weaving Master	LDA – Lower Divn.Asstt.	HTC- Handloom Training Center
AEE - Asstt Exv.Engineer	RO -Research Officer	ARO – Asstt Research Off.	HPC- Handloom Production Center
CTO - Chief Textile Officer	SO - Statistical Officer	DHO – Dy.Handloom Off.	PPC- Product Procurement Center
PTDC - Powerloom Training cum Demonstration Center	HTI - Handloom Training Institute.	JE - Jr.Engineer.	PRO- Public Relation Officer
HRDC- Handloom Research & Designing Center.			
WESU- Weavers Extension Service Unit			